



# CHICOPEE<sup>®</sup>

## J-Cloth<sup>®</sup> Compostable

The original and only Biodegradable and Compostable wipe with food contact certification for optimal safety.

Chicopee<sup>®</sup> True Confidence<sup>™</sup>

J-Cloth<sup>®</sup> Compostable is produced with 100% natural biodegradable fibres from PEFC (Program for the Endorsement of Forest Certification) certified sources. It is the first and only certified food contact cleared Biodegradable and Compostable wipe according to DIN EN 13432:2000-12. In order to deliver a more sustainable solution, the polybag is also biodegradable and compostable, and the new carton packaging is made from FSC (Forest Stewardship Council) certified materials.



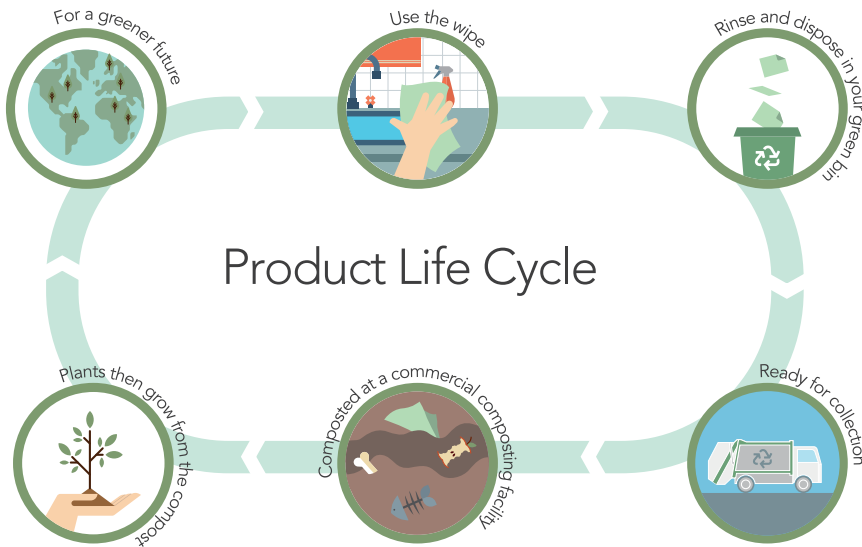
Certificate for the bag



Certificate for the wipe



## New sustainable packaging and polybag



## Problems

- Disposable wipes are usually made of synthetic fibres, like polyester and polypropylene that can't be recycled, and dumped away; increasing landfill waste
- The disposal of the packaging and polybags of wipes may result in high landfill waste
- Cross-contamination is one of the top causes of food poisoning and is caused when food comes into contact with bacteria; kitchen tools that have not been cleaned thoroughly may transfer bacteria to food if there's direct contact
- Many wipes are hard to rinse and keep clean, wasting time and causing cloths to develop odour quickly
- Inferior disposable food service wipes cause high consumption and increase the time taken to clean

## Solutions

- As J-Cloth Compostable is made from bio-based raw materials, it is compostable and biodegradable; helping reduce landfill waste and answering waste management concerns
- Both the polybag and the packaging are made of renewable materials and the polybag is biodegradable and compostable
- J-Cloth® Compostable is FCC certified (Food Contact Clearance), which makes it safe to use in food service establishments. To reduce the risk of cross contamination, the wipes are color coded according to HACCP Hazard Analysis and Critical Control Points ) norms
- The wipe can be used with a variety of chemical solvents, and after rinsing-out can be disposed in the food waste bin
- The unique structure of J-Cloth® Compostable ensures a more hygienic cleaning and easy rinse, for a quick disposal

All Chicopee Europe Foodservice products carry a voluntarily obtained FCC certificate, and can be intentionally used in contact with foods.

Article Number	Sheet Size (L x W)	Sheets Per Pack	Packs Per Case	Product Type	Pallet (Cases)
● JCL 10 B 74443	43 x 32 cm	50	10	1/4 Fold	50
● JCL 10 R 74442	43 x 32 cm	50	10	1/4 Fold	50
● JCL 10 G 74444	43 x 32 cm	50	10	1/4 Fold	50
● JCL 10 Y 74441	43 x 32 cm	50	10	1/4 Fold	50

For more information: +31 485 398 426 [www.chicopee.com](http://www.chicopee.com) [europe@chicopee.com](mailto:europe@chicopee.com) Chicopee\_Europe